

PRODUCT DATASHEET

Catalog No: SYN20200300

Product Name: Primer/Probe Set for US CDC

Description:

This product includes four kinds of lyophilized primers/probes mixes:

1. RP Primers/Probe Mix
2. 2019-nCoV_N1 Primers/Probe Mix
3. 2019-nCoV_N2 Primers/Probe Mix
4. 2019-nCoV_N3 Primers/Probe Mix

Reagent Label	Target Gene	Description			Reactions / Tube
RP Primers/Probe Mix	Hs RNase P P30	RNAse P Forward Primer	AGATTTGGACCTGCGAGCG		100rxn
		RNAse P Reverse Primer	GAGCGGCTGTCTCCACAAGT		
		RNAse P Probe	TTCTGACCTGAAGGCTCTGCGCG	FAM	
2019-nCoV_N1 Primers/Probe Mix	2019-nCoV_N	2019-nCoV_N1 Forward Primer	GACCCCAAAATCAGCGAAAT		100rxn
		2019-nCoV_N1 Reverse Primer	TCTGGTTACTGCCAGTTGAATCTG		
		2019-nCoV_N1 Probe	ACCCCGCATTACGTTTGGTGGACC	FAM	
2019-nCoV_N2 Primers/Probe Mix	2019-nCoV_N	2019-nCoV_N2 Forward Primer	TTACAAACATTGGCCGCAAA		100rxn
		2019-nCoV_N2 Reverse Primer	GCGCGACATTCCGAAGAA		
		2019-nCoV_N2 Probe	ACAATTTGCCCCCAGCGCTTCAG	FAM	
2019-nCoV_N3 Primers/Probe Mix	2019-nCoV_N	2019-nCoV_N3 Forward Primer	GGGAGCCTTGAATACACCAAAA		100rxn
		2019-nCoV_N3 Reverse Primer	TGTAGCACGATTGCAGCATTG		
		2019-nCoV_N3 Probe	AYCACATTGGCACCCGCAATCCTG	FAM	

QC:

Mass spectrometry results are provided; please see the supplemental materials at the end of this datasheet.

Use and Suggestions:

1. Centrifuge the mix tube first.
2. Add 150uL 1xTE or nuclease-free water to dissolve the lyophilized mix.
3. Add 1.5ul mix for each reaction (25 µL).

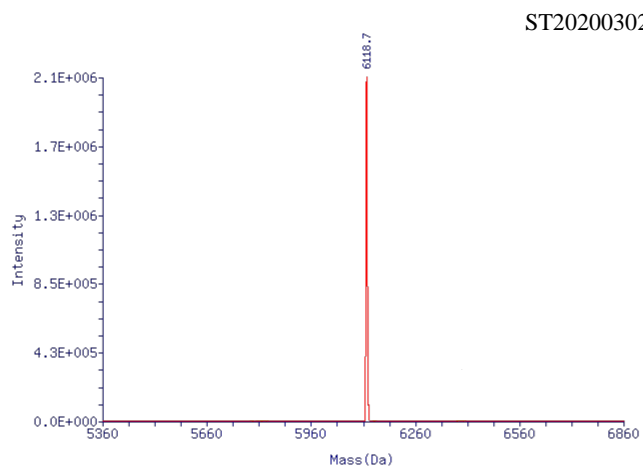
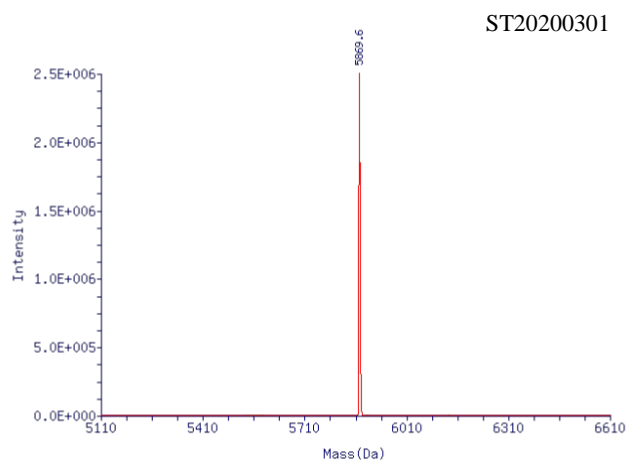
Shipping, Storage and Stability:

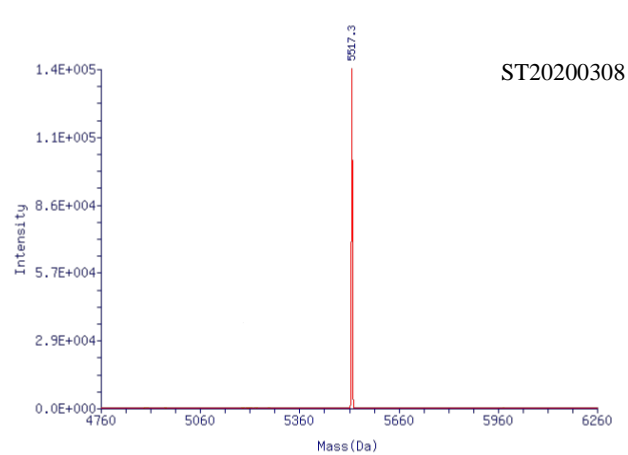
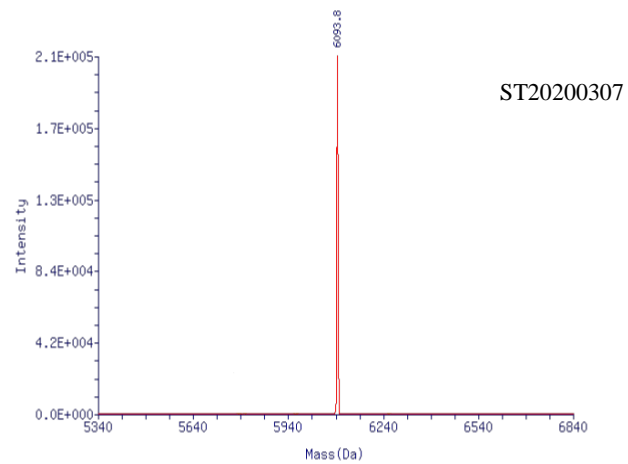
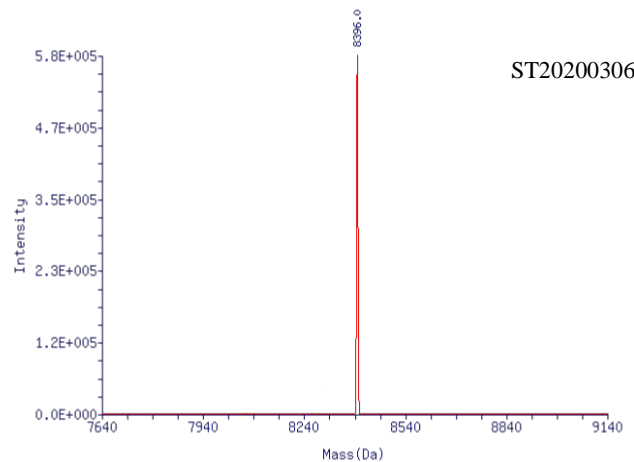
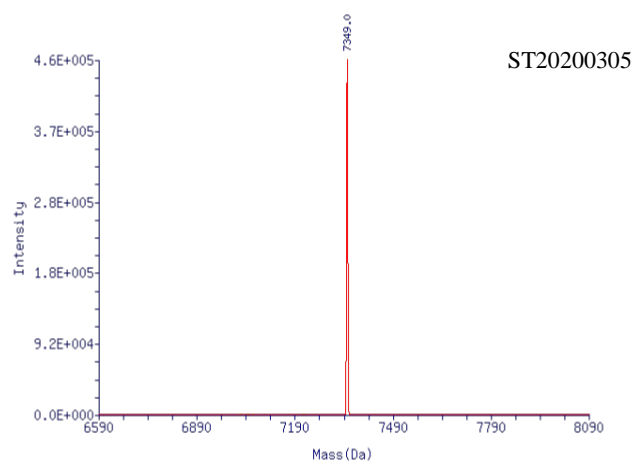
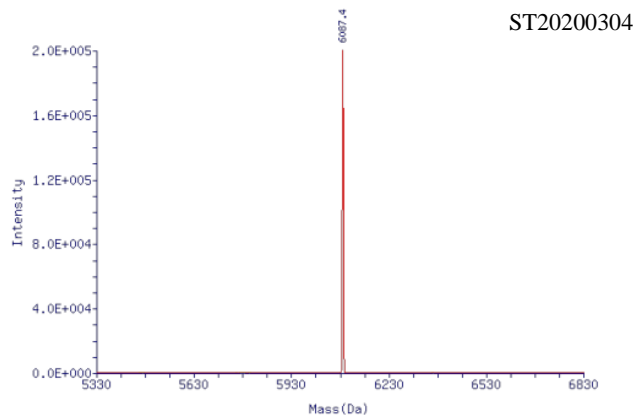
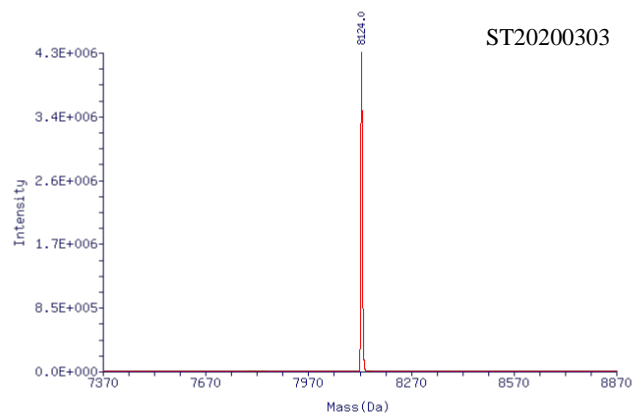
1. Store all primers and probes at -20 °C.
2. Always check the expiration date prior to use. Do not use expired reagents.
3. Protect fluorescence probes from light.

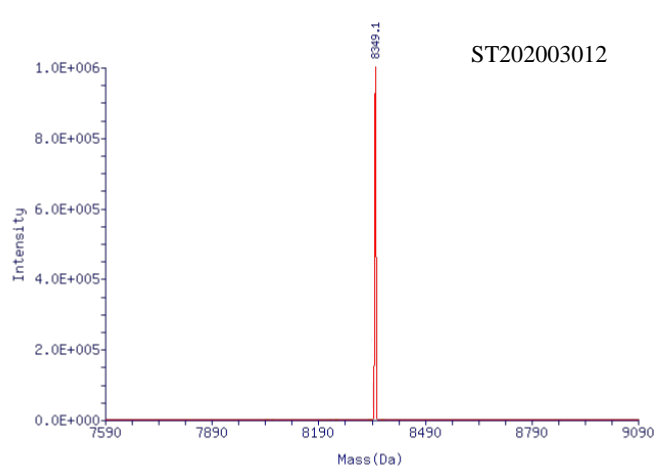
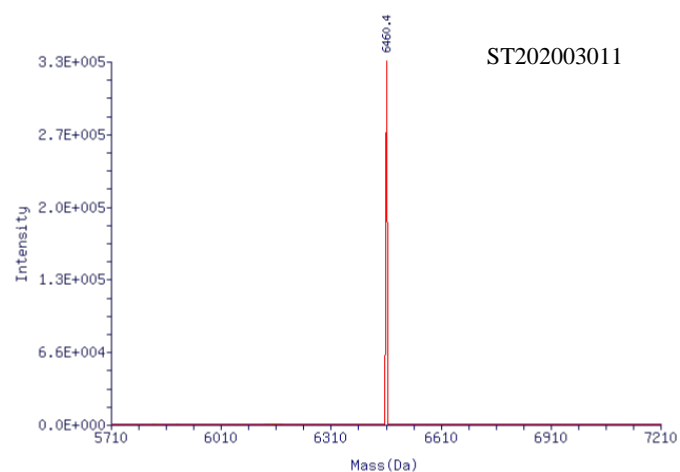
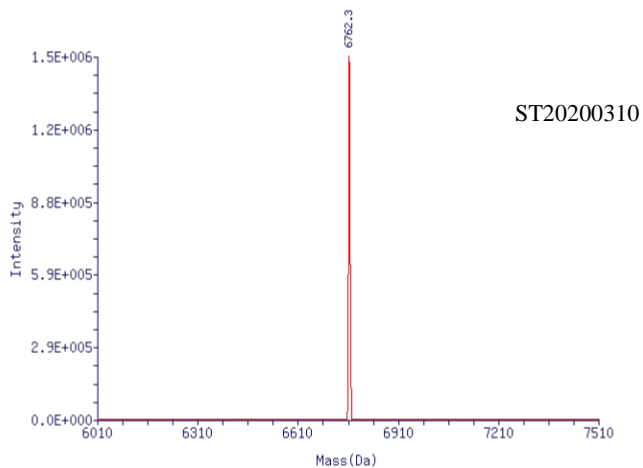
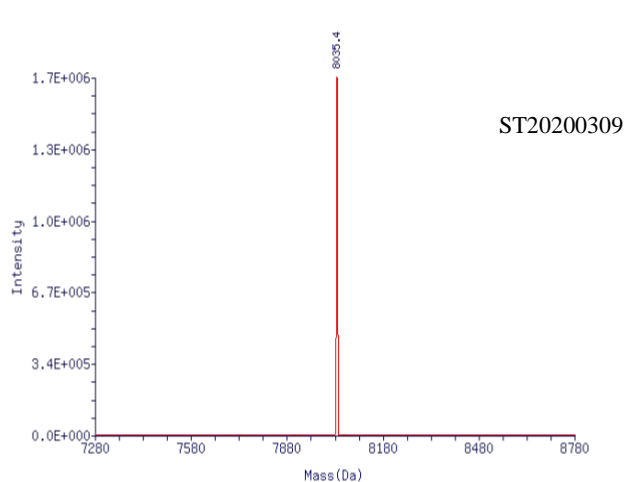
FOR RESEARCH LABORATORY TEST USE ONLY!

Certificate of Analysis:

Catalog #	Part#	Lot#	Name	Sequence	MW
SYN20200300	ST20200301	WS20200224016S	RNAse P Forward Primer	AGATTTGGACCTGCGAGCG	5868.8
	ST20200302	WS20200224017S	RNAse P Reverse Primer	GAGCGGCTGTCTCCACAAGT	6118
	ST20200303	WS20200224018S	RNAse P Probe	FAM- TTCTGACCTGAAGGCTCTGCGC G-BHQ1	8123.7
	ST20200304	WS20200224007S	2019-nCoV_N1 Forward Primer	GACCCCAAAATCAGCGAAAT	6088
	ST20200305	WS20200224008S	2019-nCoV_N1 Reverse Primer	TCTGGTTACTGCCAGTTGAATC TG	7349.8
	ST20200306	WS20200224009S	2019-nCoV_N1 Probe	FAM- ACCCCGCATTACGTTTGGTGGA CC-BHQ1	8396.8
	ST20200307	WS20200224010S	2019-nCoV_N2 Forward Primer	TTACAAACATTGGCCGCAAA	6094
	ST20200308	WS20200224011S	2019-nCoV_N2 Reverse Primer	GCGCGACATTCCGAAGAA	5517.6
	ST20200309	WS20200224012S	2019-nCoV_N2 Probe	FAM- ACAATTTGCCCCCAGCGCTTCA G-BHQ1	8036.7
	ST20200310	WS20200224013S	2019-nCoV_N3 Forward Primer	GGGAGCCTTGAATACACCAAA A	6761.4
	ST20200311	WS20200224014S	2019-nCoV_N3 Reverse Primer	TGTAGCACGATTGCAGCATTG	6461.2
	ST20200312	WS20200224015S	2019-nCoV_N3 Probe	FAM- AYCACATTGGCACCCGCAATCC TG-BHQ1	8349.9







FOR RESEARCH LABORATORY TEST USE ONLY!

For additional information or assistance, please visit www.synbio-tech.com or email us at support@synbio-tech.com.

4250 US-1 #3, Monmouth Junction, NJ 08852

(732) 230-3003