

ProXpress (Human-IgG-Fc) Rapid Test Card Manual

Cat. No.: HX002325-5

Unit size: 5

Expected Use

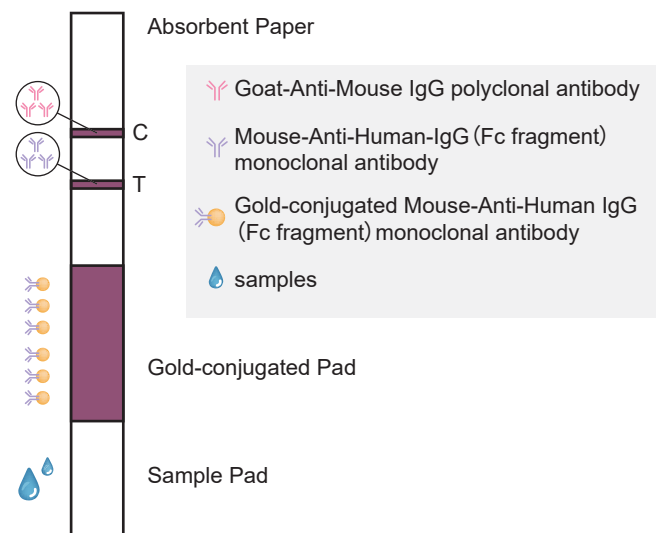
Rapidly detects human-IgG antibody products obtained from human serum and eukaryotic expression systems.

Detection Principle

This product is a semi-quantitative protein detection reagent that relies on the use of a colloidal gold-based lateral flow assay. The foundation of this product is comprised of various components, such as a sample pad, a gold-conjugated pad, a chromatography membrane, and absorbent paper.

When the sample flows through the gold-conjugated pad, if the sample contains human IgG antibodies, it binds to the mouse-anti-human IgG (Fc fragment) monoclonal antibody fixed on the gold-conjugated pad.

The complex is captured by mouse-anti-human IgG Fc monoclonal antibodies on the T line. As the captured complex accumulates, it appears purplish-red band. Moving onto the control line (C line), the goat-anti-mouse-IgG antibody capture the gold-conjugated mouse monoclonal antibody. To determine the presence or absence of human IgG antibodies in the sample being tested, users need to read whether both the T line and C line are colored and the intensity of the coloration.



Schematic Diagram of the Test Principle

Package Contents

1. Human-IgG (Fc fragment) rapid test cards
2. ProXpress dilution buffer
3. Instructions

Storage & Validity

Stored in a cool place, 4~30°C, do not freeze, avoid direct sunlight. Valid for 12 months.

Instructions

1. Begin by letting the test card equilibrate to room temperature before conducting any further steps. This is crucial to ensure accurate results.
2. Draw 20 μL of the pre-diluted test sample using a micropipette and dispense it into the sample well.
3. Next, add 50 μL of ProXpress dilution buffer to the sample well.
4. After completing the previous steps, read the results after 10-15 minutes.

Product Performance Indicators

The test strip has a minimum detection limit of 0.3 $\mu\text{g/mL}$. In cases where the Human-IgG antibody concentration falls within the range of 0.25 $\mu\text{g/mL}$ to 30 $\mu\text{g/mL}$ in the test sample, the color depth of the T line displays a positive correlation with the sample concentration.

Results Interpretation

1. **Positive Results:** The color development of both the C and T lines.
2. **Negative Results:** The color development of the C lines, and T lines no color visible.
3. Please judge the relative expression level based on the color chart.
4. **Invalid Result:** If no color is observable on the C line, regardless of the presence of color on the T line. This indicates that the reagent is ineffective, rendering the test invalid.

ProXpress (Human IgG-Fc)



Test card color rendering display diagram

Troubleshooting

Observation	Possible Cause	Recommended Action
Light color display of C line	The sample have interfering substances	Repeat the test with 10-fold dilution of the test sample.
Detection failed	Reagent failure	Use the test card within the expiration.

About Us

Synbio Technologies is a leading biotech company dedicated to transforming biology into technology. We are committed to enabling advancements in life science research, bio-manufacturing, health, and agriculture through our premier synthetic biology platform. Our core competencies involve gene synthesis, molecular biology, genomics, protein engineering, and phage display. Synbio Technologies is at the forefront of biotechnology, providing comprehensive, multi-level, and industrialized DNA services to scientists all over the world. For more information, please visit www.synbio-tech.com.



DNA WRITING



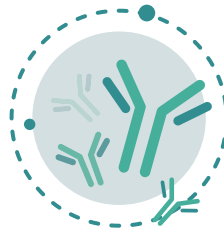
DNA READING



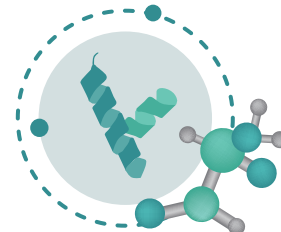
DNA EDITING



SYNTHETIC BIOLOGY



ANTIBODY DISCOVERY



PROTEINS & PEPTIDES

21 August 2023